

LE CARNAVAL DES ANIMAUX

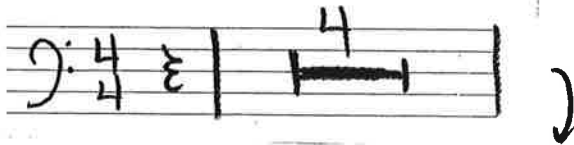
CONTREBASSE

C. SAINT-SAËNS

N° 1

Marche Royale du Lion

Allegro non troppo $\text{♩} = 108$



5 *ff* *ritù allegro* C. BASSE **3** *V* *n*

13 **3**

17 **3**

21 **3** *pizz* **2** *1^{er} Piano* C. BASSE *arco* *V* *n*

30 *ff* **1** *V*

34 *ff* **4** *f* *n*

42 **2** *ff* **1** *n* *V* *n*

49 *ff* *V* *n*

55 *ff* *V* *n*

Main musical score for the double bass part of 'Le Carnaval des Animaux'. The score is written in bass clef with a 4/4 time signature. It consists of ten staves of music, with measure numbers 5, 13, 17, 21, 30, 34, 42, 49, and 55 indicated on the left. The music features various dynamics including fortissimo (ff), piano (p), and first piano (1^{er} Piano). There are also performance instructions such as 'pizz' (pizzicato) and 'arco' (arco). The score includes triplets, slurs, and accents. A handwritten '3' in a box is present above the first staff, and a handwritten '4' is present above the first measure of the first staff.

2 CB

2

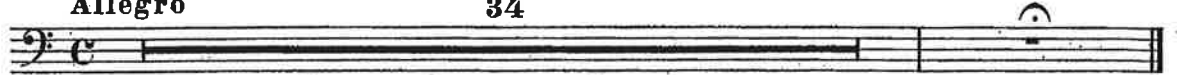
CONTREBASSE

N° 2

Poules et Coqs

Allegro

34



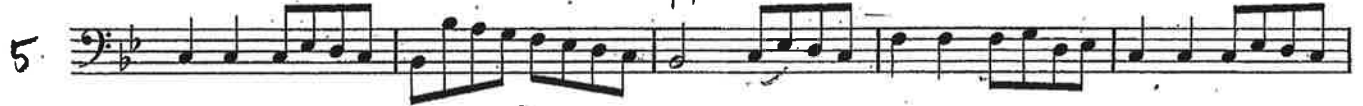
N° 4

Tortues

Andante maestoso

1er Piano

C. BASSE



N° 5

L'Éléphant - use string quintet parts

No 8

tacet.

No. 9 cuckoo in the deep woods

Andante

Handwritten musical score for 'No. 9 cuckoo in the deep woods'. The score is written in bass clef with a key signature of three sharps (F#, C#, G#) and a 3/4 time signature. It consists of six staves of music. The first staff begins with a measure number '3' and a dynamic marking 'pp'. The second staff has a measure number '8'. The third staff has a measure number '15'. The fourth staff has a measure number '23' and includes a '4' above the notes. The fifth staff has a measure number '30'. The sixth staff has a measure number '39'. The piece concludes with a double bar line.

Nº 10

Volière

Moderato grazioso
pizz

Handwritten musical score for 'Nº 10 Volière'. The score is written in bass clef with a key signature of two flats (Bb, Eb) and a 3/4 time signature. It consists of six staves of music. The first staff begins with a dynamic marking 'p'. The second staff has a measure number '1' in a box. The third staff has a measure number '3' in a box. The fourth staff has a measure number '4' in a box. The fifth staff has a measure number '1' in a box. The sixth staff has a measure number '1' in a box and ends with a dynamic marking 'pp'.

CB 4

No. 13 The Swan

3 *sim.*

5

7

9

11

13

15

17 *pp*

19 *sim.*

21

24 *a tempo*

Rit. *Lento*

pp

CBS

6

CONTREBASSE

N° 14

Final

Molto allegro

17

Start
↓

1 pizz
p

2

3
cresc. - - - f

5 pizz
p

CB2

CONTREBASSE

7

6 arco
f

7



9

10

ff